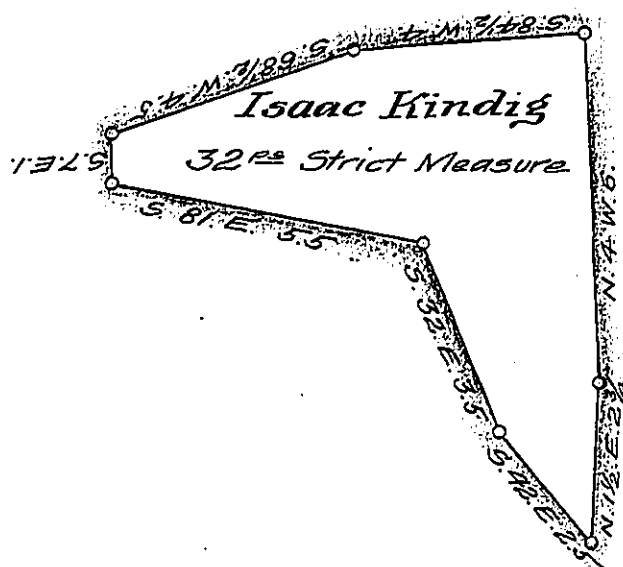


FORM NO. 1.



A Draught of an Island Situate in the river Susquehanna Called "Sunfish Island", about ten perches to the Northward of Michael Wissler's Island, about twenty perches to the Eastward of Snyder's Island, opposite the lands of Jacob Strickler on the Lancaster shore & about twenty perches below the falls in Manor township Lancaster County Containing thirty two perches &c^o Surveyed in pursuance of a Warrant dated the 3^d day of October A.D. 1811 Granted unto Isaac Kindig October the 6th A.D. 1811

p^c Jacob Hibshman D.S.

To Andrew Porter Esq^r }
 Surveyor General }

IN TESTIMONY that the above is a copy of the original remaining on file in the Department of Internal Affairs of Pennsylvania, made conformably to an Act of Assembly approved the 16th day of February 1833, I have hereunto set my hand and caused the Seal of said Department to be affixed at Harrisburg, this twenty first day of January 1908.

Henry Howell

Secretary of Internal Affairs.